

# DATA SHEET

T-REX150 concrete installation housing Ø150x120mm for luminaire/loudspeaker

## PBN15002

	<p><b>PBN15002</b> concrete installation housing for luminaire/loudspeaker T-REX150 with mineral fibre board cover Item nr.: 415002 EAN : Dimension: Ø150x120mm</p> <p>The electrical installation box for installation in concrete is intended to accommodate a lamp or speaker. The box can be attached to the horizontal or vertical formwork in two ways: via a previously nailed box lid or by nails through the side feathers of the box and lid. After removing the formwork, the central part of the cover is hammered out on the perforation, and access to the box remains open on the ceiling. If the cover is attached via side feathers, when removing the formwork, part of the tongue remains on the formwork together with the nails. The box contains 4 slots for M20 pipes and 2 slots for M25 pipes, all 6 without the use of pliers.</p>
---	--

- For horizontal and vertical concrete formwork
- Easy and fast installation
- 4 grooves for M20 pipes and 2 grooves for M25 pipes, all hammer grooves
- Large selection of covers with openings according to the sizes of lamps and speakers

### Technical data

Purpose of installation	Concrete	Materijal	Polypropylene
Protection category	IP30	Hallogen free	Yes
Diameter	Ø150 mm	RoHS:	Yes
Depth of installation	120 mm	Self-extinguishing	No / 650°C
Installation hole diameter	Max Ø135 mm	Min. application temperature	-25°C
Nr. of entries	4xM20 + 2xM25(max.)	Max. application temperature	40°C
LED wattage max. / Inst.deph	20 Watt / 105 mm	Packing	1/15
Lamp wattage max. / Inst.deph	50 Watt / 105 mm		



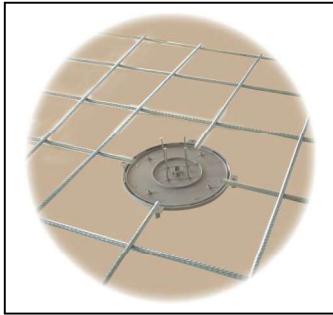
The information on the product may differ. We reserve the right to modify the product in order to improve functionality and quality.

P.I.T. Alarm d.o.o. | Ivanjorečka cesta 7, 10373 Ivanja Reka, Croatia | Telephone: +385 (1) 2024 138 | pitalarm@pitalarm.hr

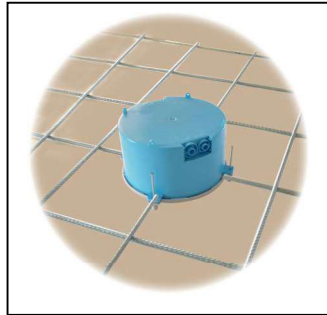
## INSTALLATION INSTRUCTIONS

### Concrete installation housing for luminaire/loudspeaker T-REX150

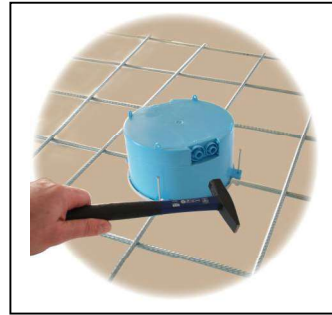
#### PBN150



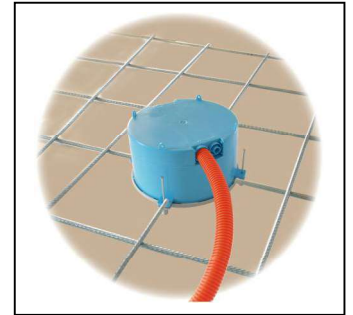
1 Nail the box cover to the formwork.



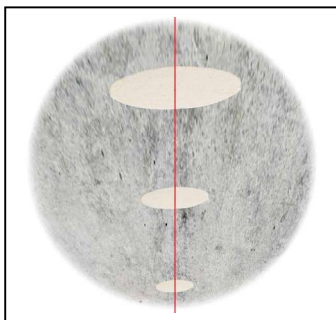
3 Attach the box onto the cover and check the fixture.



2 Punch the holes with a hammer.



2.1 Cut the excess conduit straight.  
2.2 Insert the end of the conduit into the box and check that the conduit is firmly fixed in the hole.



5 After formwork has been removed, drill the hole

